

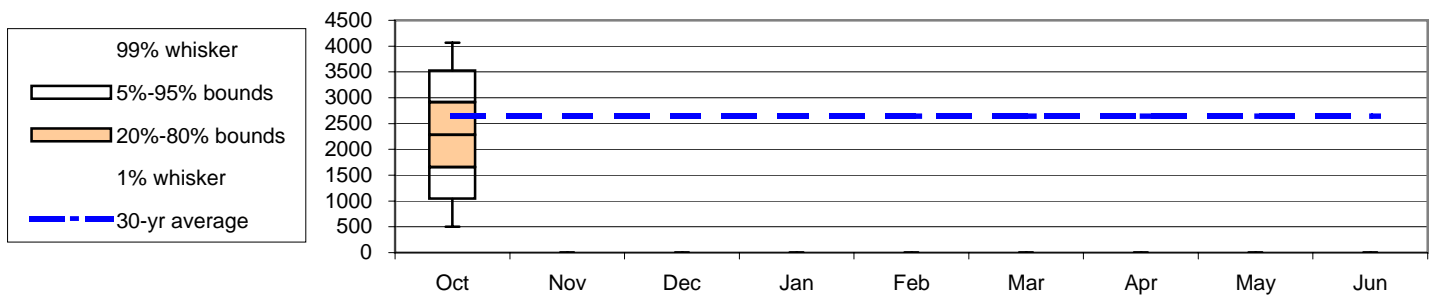
<b>Dworshak Flood Control</b>		
Most Probable Apr-Jul Runoff Volume	2283	KAF
31-Jan Flood Control Space	859	KAF
31-Jan Flood Control Elevation	1547.2	ft

% Normal (1971-2000)    % Median (1929-1999)

86%    85%

<b>Seasonal Flood Control (assumes no shift of flood control space to Grand Coulee)</b>									
Forecast Date>>	Oct	Nov	Dec	Jan	Feb	Mar	Apr	May	Jun
Apr-Jul Runoff Forecast	2283								
First-of-Month Elev	1519.5								
End-of-Month FC Space	--	--	700	859					
End-of-Month FC Elev	--	--	1558.2	1547.2					

Spread of values around expected forecast



<b>Apr-Jul Runoff Forecast Calculation:</b>					
Variable	Month	Observed Value	% of Average	Regression Coefficient	Marginal Runoff (KAF)
		A		B	=A*B
SOI	Sep	-0.70		511.73	-358.2
Intercept		1		2641.52	2641.5
1-Oct Forecast (KAF)				Σ	2283.3

Notes:  
 1. The given forecast is the official Corps of Engineers forecast for Dworshak. If you have any questions please contact Ken Soderlind (503 808-3950), Patti Etzel (503 808-3958) or John McCoskery (503 808-3951).  
 2. Due to updated values for precipitation, snow or streamflow, subsequent forecasts may be different from the forecast published herein.  
 3. 15-Dec and 31-Dec flood control space is fixed at 700 KAF.

Data Station	Sept	Nov	Dec	1-Jan	1-Feb	1-Mar	1-Apr	1-May	1-Jun
<b>Climate (Stdzd SOI)</b>									
September SOI	-0.70								
<b>Precipitation (monthly depth, inches)</b>									
Headquarters, ID		--	--						
<b>Snow Water Equiv (first of month SWE depth, inches)</b>									
Elk Butte, ID				--	--	--	--	--	--
Hemlock Butte, ID				--	--	--	--	--	--
Hoodoo Basin, MT				--	--	--	--	--	--
Pierce RS, ID				--	--	--			
Shanghi Summit, ID							--	--	
Lost Lake, ID								--	--
<b>Streamflow (monthly volume, KAF)</b>				Jan	Feb	Mar	Apr	May	Jun
Dworshak Inflow				--	--	--	--	--	--