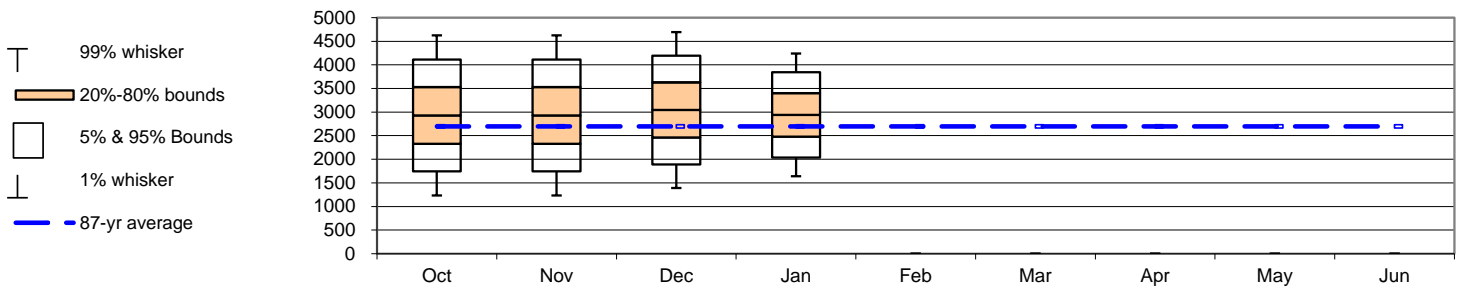


Runoff Forecast and Flood Risk Management (FRM)				1981-2010 Average	Percent of 30yr Average	1929-2008 Average	Percent of Average
Most Probable Runoff Volume	Apr-Jul	2941	KAF	2438	121%	2696	109%
	May-Jul	2066	KAF	1784	116%	1972	105%
31-Jan Flood Risk Management Space		1090	KAF				
31-Jan Flood Risk Management Elevation		1530.5	ft				

Seasonal Flood Risk Management (assumes no shift of flood risk management space to Grand Coulee)									
Forecast Date>>	Oct	Nov	Dec	Jan	Feb	Mar	Apr	May	Jun
Apr-Jul Runoff Forecast	2929	2929	3043	2941					
First-of-Month Elev	1519.1	1518.7	1526.2	1520.7					

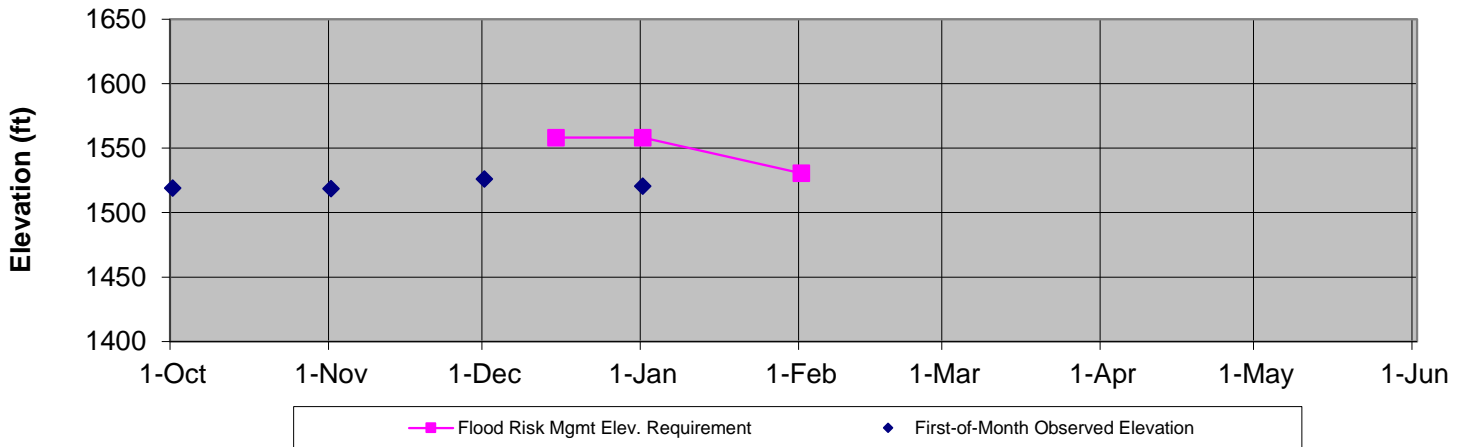
Date >>		15-Dec	31-Dec	31-Jan	28-Feb	31-Mar	15-Apr	30-Apr	31-May
FRM Space	--	700	700	1090					
FRM Elevation	--	1558.2	1558.2	1530.5					

Spread of values around expected forecast



### Dworshak Flood Risk Management Elevations - 2018

Latest water supply forecast: Jan



## Dworshak : January Runoff Forecast & Flood Risk Management Calculation

Apr-Jul Runoff Forecast Calculation					
Variable	Month	Observed Value	% of Average	Regression Coefficient	Runoff (KAF)
		A		B	=A*B
SOI	Sep	0.60		355.71	213.4
HQSI Cumulative Precip	Oct-Date	15.95	114%	48.12	767.5
Elk Butte SWE	1-Jan	16.10	109%	6.25	100.6
Cool Creek SWE	1-Jan	18.9	104%	9.96	188.2
Hoodoo Basin SWE	1-Jan	18.7	110%	12.22	228.5
Sherwin SWE	1-Jan	5.1	112%	44.69	227.9
Lost Lake SWE	1-Jan	22.3	97%	4.24	94.6
Intercept		1		1119.86	1119.9
1-Jan Forecast (KAF)					Σ 2940.7

Data Station	Sept	Nov	Dec	1-Jan	1-Feb	1-Mar	1-Apr	1-May	1-Jun
<b>Climate (Stdzd SOI)</b>									
September SOI	0.60								
<b>Precipitation (in)</b>									
Headquarters, ID	3.65	6.20	6.10	--	--	--	--		
Cumulative HQSI Data	3.65	9.85	15.95	--	--	--	--		
<b>Snow Water Equiv (First of Month values) (in)</b>									
Elk Butte, ID				16.1	--	--	--		
Cool Creek, ID				18.9	--				
Hoodoo Basin, MT				18.7	--	--	--	--	--
Sherwin, ID				5.1	--	--	--		
Shanghi Summit, ID								--	--
Lost Lake, ID				22.3	--	--	--	--	--
Hemlock, ID								--	--
Crater Meadows Mar						--	--		
<b>Streamflow (End of Month) (kaf)</b>				Jan	Feb	Mar	Apr	May	Jun
Dworshak Inflow				--	--	--	--	--	--

### Notes:

- The given forecast is the official Corps of Engineers forecast for Dworshak. If you have any questions please contact Steve Hall (509 527 7550), Wayne Jousma (509-527-7606), Amanda Morelos (509-527-7632), or Alfredo Rodriguez (509-527-7532).
- Due to updated values for precipitation, snow or streamflow, subsequent forecasts may be different from the forecast published herein.
- 15-Dec and 31-Dec Flood Management Space is fixed at 700 KAF.
- Cool Creek SWE data was estimated for Jan 1. by the NRCS.
- Headquarters Cumulative Precipitation was taken from the HDQI link and calculated from 1OCT-1JAN changing the November value to the correct value. This will be the link used for the remainder of the Water Year.
- D. Alfredo Rodriguez is approving as the Acting Chief Hydrology.
- Jason Ward is approving as Acting Chief Hydrologic Engineering and Power Branch

Approval:

John J. Heitstuman P.E.  
Chief Hydrology Section  
Walla Walla District USACE

William D. Proctor, P.E.  
Ch., Hydrologic Engineering and Power Branch  
Columbia Basin Water Management Division