



TECHNICAL MANAGEMENT TEAM 2008 Year End Review

Runoff and Spring/Summer Flows

Cathy Hlebechuk
November 21, 2008

Building Strong



OBSERVED 2005 – 2008 RUNOFF IN MILLIONS OF ACRE FEET

PROJECT	JAN-JUL 05		JAN-JUL 06		JAN-JUL 07		JAN-JUL08	
	OBS	%	OBS	%	OBS	%	OBS	%
HUNGRY HORSE	1.8	80	2.4	106	1.9	86	2.5	113
LIBBY	5.9	94	6.9	110	7.3	115	5.5	87
ALBENI FALLS	11.9	78	16.2	106	13.1	86	16.1	106
GRAND COULEE	54.4	86	66.9	106	63.9	102	59.6	95
DWORSHAK	2.5	69	3.5	99	2.7	77	3.8	108
LOWER GRANITE	18.1	60	32.2	107	18.9	63	27.5	92
THE DALLES	81.3	77	114.7	107	95.7	89	99.2	92

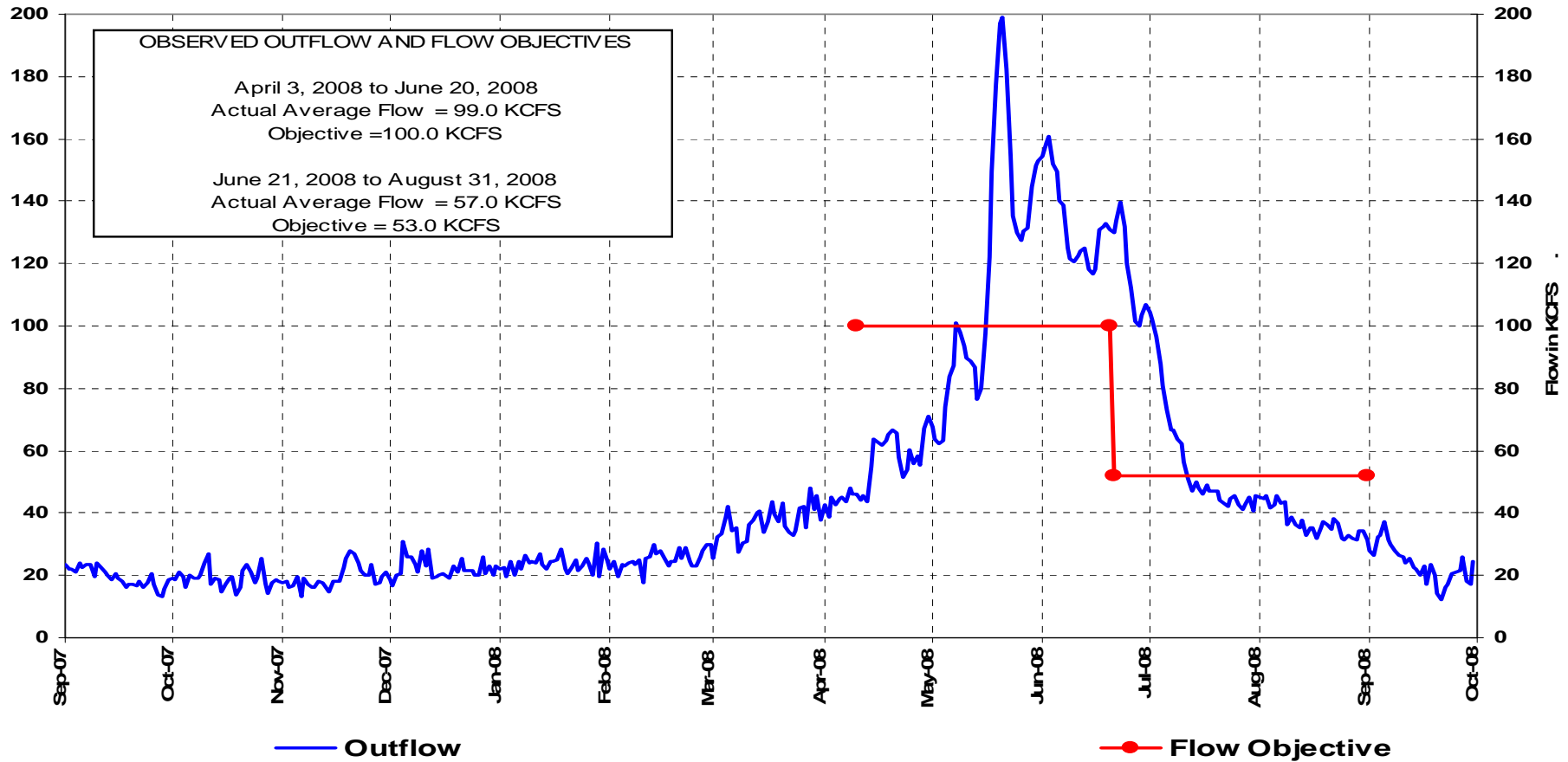
PROJECT	APR-AUG 05		APR-AUG 06		APR-AUG 07		APR-AUG08	
	OBS	%	OBS	%	OBS	%	OBS	%
HUNGRY HORSE	1.5	71	2.1	104	1.6	77	2.5	119
LIBBY	5.6	89	6.6	106	6.8	109	5.5	89
ALBENI FALLS	9.6	71	13.9	104	10.1	76	15.3	114
GRAND COULEE	48.8	81	61.2	101	57.4	95	59.7	99
DWORSHAK	1.7	62	2.7	100	1.8	67	3.6	131
LOWER GRANITE	14.4	63	25.6	112	13.5	59	22.8	106
THE DALLES	68.5	74	97.5	105	78.9	85	93.2	100

Building Strong



Lower Granite

September 01, 2007 to October 01, 2008

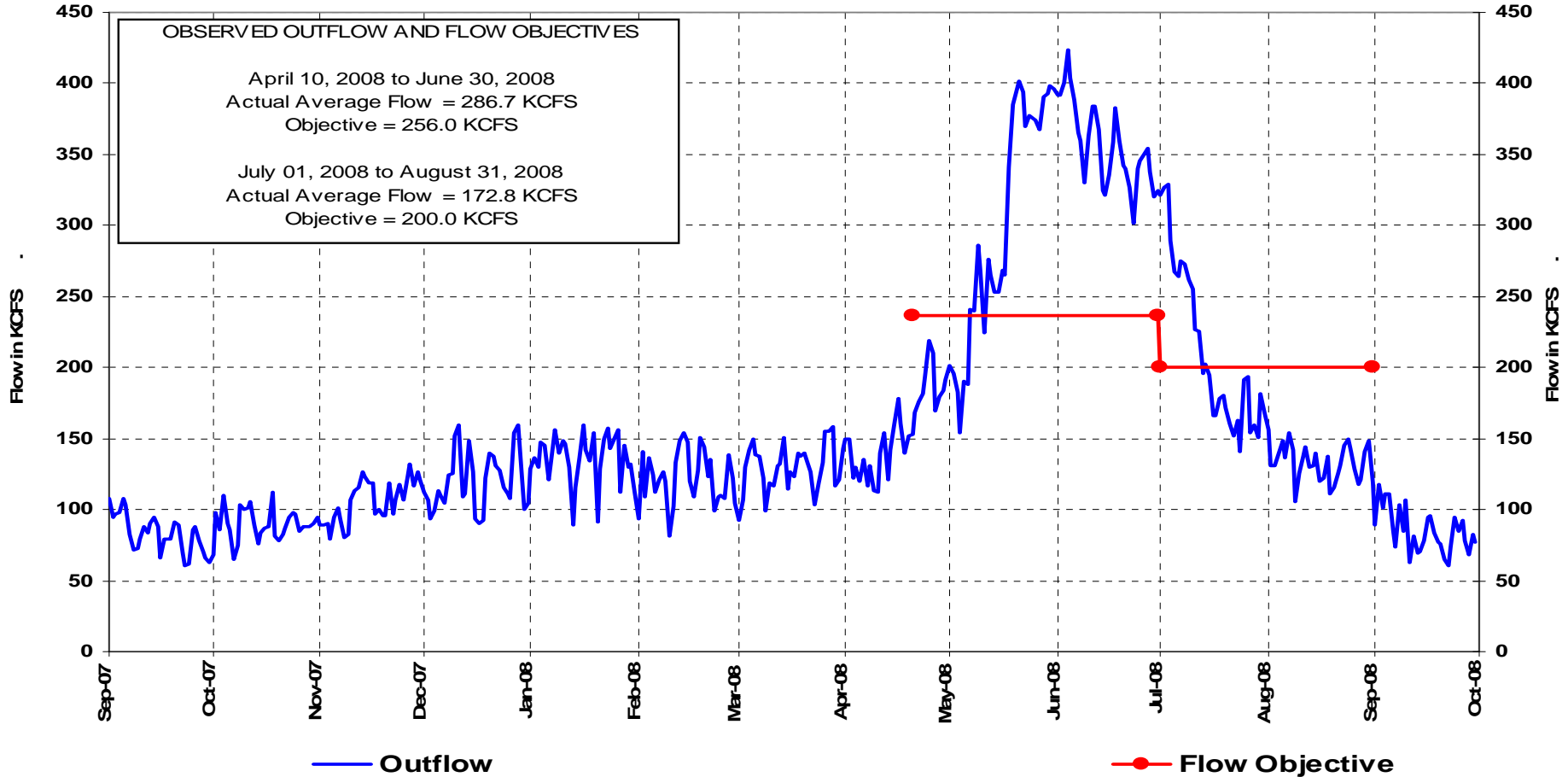


Building Strong



McNary

September 01, 2007 to October 01, 2008

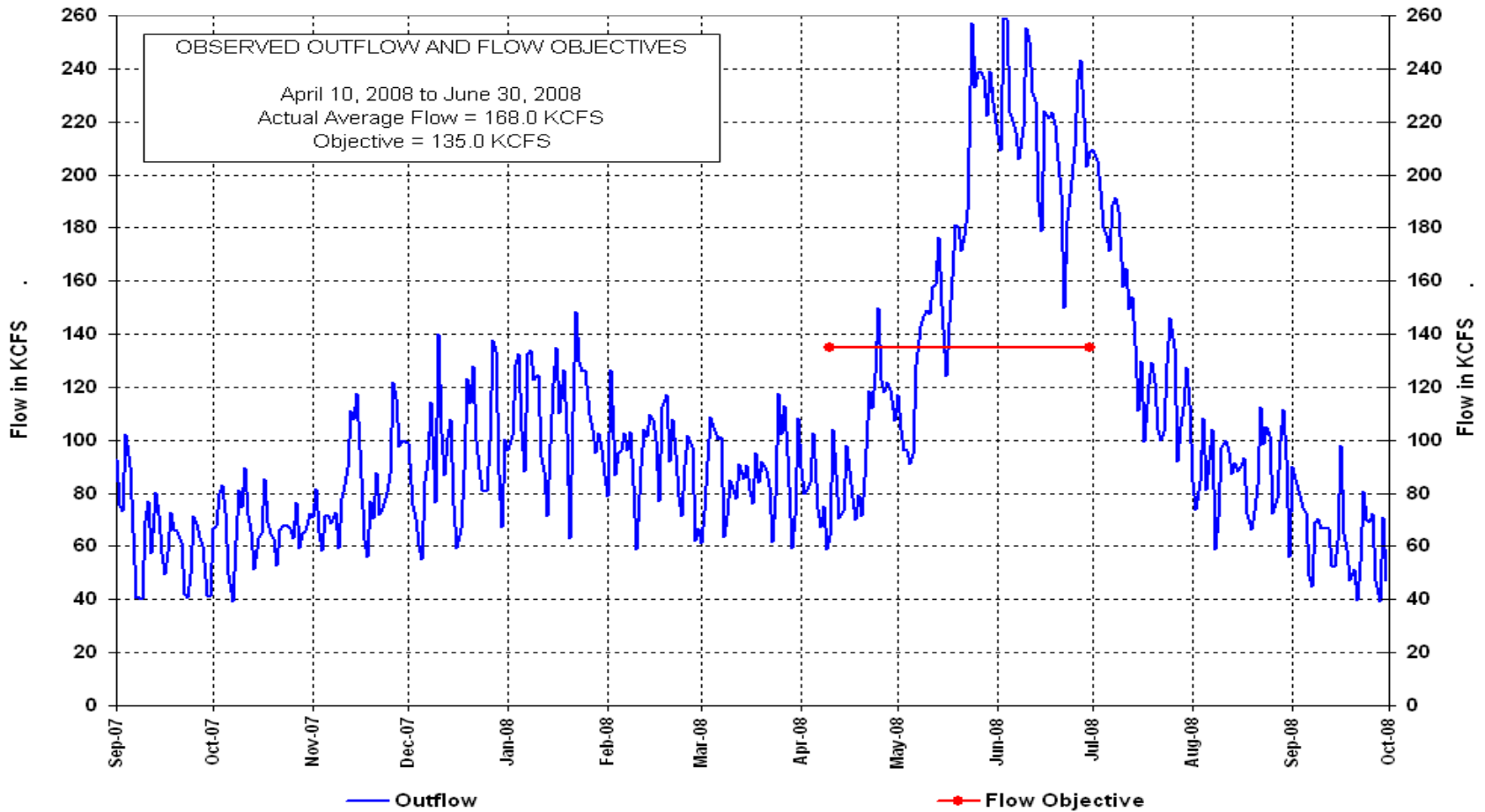


Building Strong



Priest Rapids

September 01, 2007 to October 01, 2008



Building Strong