

Runoff Forecast and Flood Control

Most Probable Runoff Volume	Apr-Jul	1113	KAF
	May-Jul	657	KAF
	Jun-Jul	228	KAF

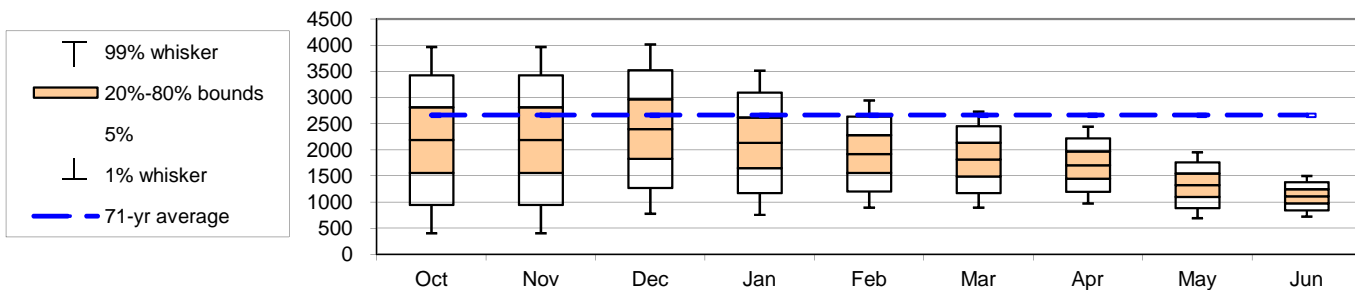
1929-2010 Average	Percent of Average
2663	42%
1953	34%
913	25%

Seasonal Flood Control (assumes no shift of flood control space to Grand Coulee)

Forecast Date>>	Oct	Nov	Dec	Jan	Feb	Mar	Apr	May	Jun
Apr-Jul Runoff Forecast	2189	2189	2398	2136	1922	1815	1709	1325	1113
First-of-Month Elev	1519.4	1517.2	1522.7	1534.4	1546.5	1565.7	1586.1	1586.3	1597.7

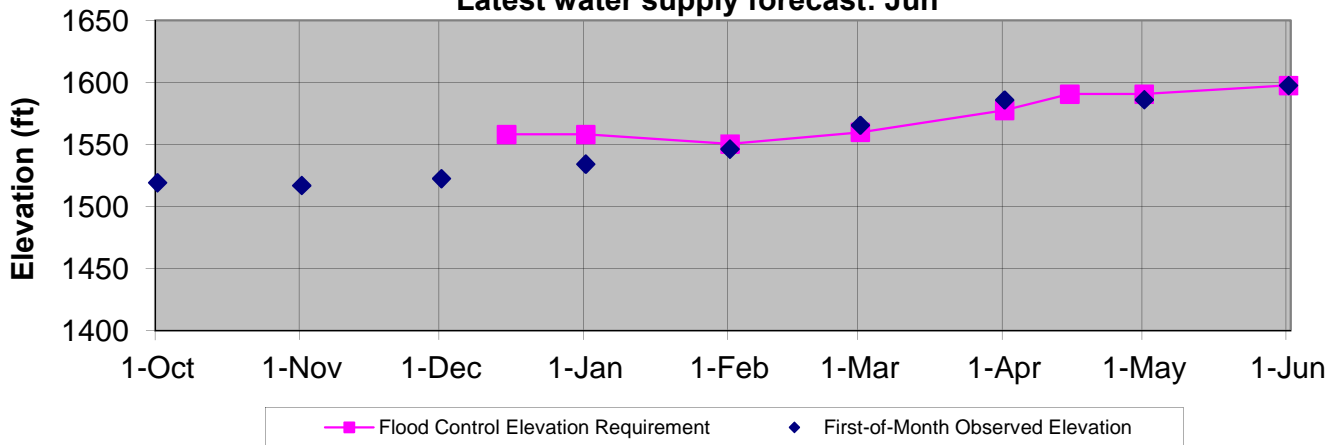
Date >>	15-Dec	31-Dec	31-Jan	28-Feb	31-Mar	15-Apr	30-Apr	31-May	
Flood Control Space	--	700	700	811	674	397	172	172	43.0
Flood Control Elevation	--	1558.2	1558.2	1550.6	1560.0	1577.7	1590.7	1590.7	1597.7

Spread of values around expected forecast



Dworshak Flood Control Elevations - 2015

Latest water supply forecast: Jun



- Notes:
1. The given forecast is the official Corps of Engineers forecast for Dworshak. If you have any questions please contact Wayne Jousma, EIT (509 527 7606), D. Alfredo Rodriguez, P.E (509 527 7532), or Steve Hall, P.E. (509 527 7550).
 2. Due to updated values for precipitation, snow or streamflow, subsequent forecasts may be different from the forecast published herein.
 3. 15-Dec and 31-Dec flood control space is fixed at 700 KAF.

Dworshak : June Runoff Forecast & Flood Control Calculation

Apr-Jul Runoff Forecast Calculation:					
Variable	Month	Observed Value	% of Average	Regression Coefficient	Marginal Runoff (KAF)
		A		B	=A*B
Hoodoo Basin SWE	1-Jan	10.8	38%	8.21	88.7
Shanghi Summit SWE	1-Jan	0.0	0%	10.26	0.0
Lost Lake SWE	1-Jan	0.1	0%	6.14	0.6
Hemlock SWE	1-Jan	0.0	0%	7.57	0.0
Intercept		1		138.78	138.8
1-May Forecast (KAF)				Σ	228.1

Data Station	Sept	Nov	Dec	1-Jan	1-Feb	1-Mar	1-Apr	1-May	1-Jun	1-Jul
Climate (Stdzd SOI)										
September SOI	-0.70									
Precipitation (in)										
Headquarters, ID	2.60	7.10	5.50	5.30	4.40	4.80	0.80			
Cumulative HQSI Data	2.60	9.70	15.20	20.50	24.90	29.70	30.50			
Snow Water Equiv (First of Month values) (in)										
Elk Butte, ID				10.5	17.3	18.5	17.9			
Cool Creek, ID				16.7	23.5					
Hoodoo Basin, MT				14.0	20.2	24.2	25.8	26.8	10.8	
Sherwin, ID				1.4	3.4	0.3	0.0			
Shanghi Summit, ID								0.0	0.0	
Lost Lake, ID				16.1	24.1	28.2	30.2	29.5	0.1	
Hemlock, ID								23.5	0.0	
Crater Meadows Mar						34.9	35.1			
Streamflow (End of Month) (kaf)				Jan	Feb	Mar	Apr	May	Jun	Jul
Dworshak Inflow				260	584	569	455	429	--	--

Approval:

John J. Heitstuman P.E.
 Chief Hydrology Section
 Walla Walla District USACE

William D. Proctor, P.E.
 Ch., Hydrologic Engineering and Power Branch
 Columbia Basin Water Management Division